

# PLAT OF SURVEY

BEING TO LOCATE THE NORTHEAST CORNER OF  
SECTION 24, T-7-N, R-3-E, JEFFERSON TOWN-  
SHIP, WILLIAMS COUNTY, OHIO.

for: John Green.

## LEGEND:

- A - POINT ESTABLISHED FROM CO. WITNESSES.
- B - IRON PIN FOUND.
- C - P.K. NAIL PLACED AT INTERSECTION OF  
LINE "A-B" & C OF FORMER RAILROAD.
- D, E, G - RAILROAD SPIKE FOUND.
- F - P.K. NAIL PLACED AT INTERSECTION OF  
LINE "D-E" & C OF FORMER RAILROAD.
- H - POINT ESTABLISHED ON C OF FORMER  
RAILROAD.
- J - FOUND STONE.

0 1"=1000' 1000

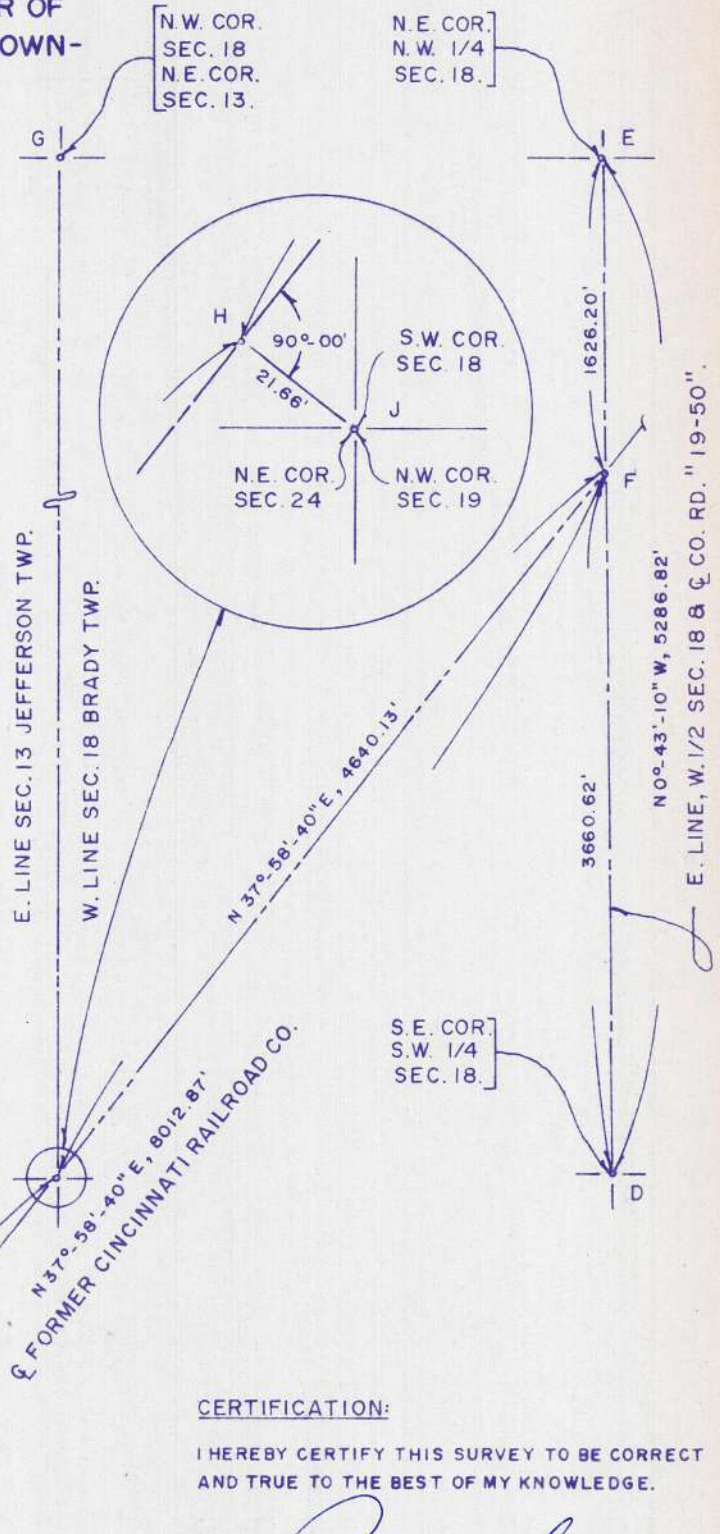
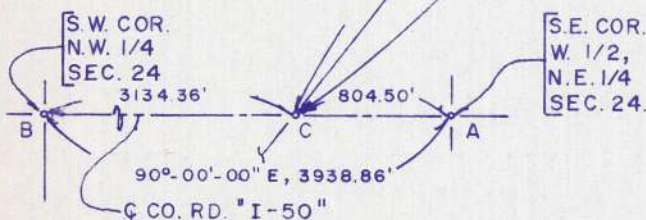
DWG D-8602-W  
MARCH-APRIL, 1986

## REFERENCE:

RIGHT OF WAY AND TRACK MAPS OF FORMER  
CINCINNATI NORTHERN RAILROAD COMPANY,  
SHEET NUMBERS 78 & 79.

## RECORD:

SURVEY FILED IN VOLUME 10-R, PAGE 320,  
OF THE RECORD OF SURVEYS IN THE WILLIAMS  
COUNTY ENGINEER'S OFFICE, COURTHOUSE,  
BRYAN, OHIO.



## CERTIFICATION:

I HEREBY CERTIFY THIS SURVEY TO BE CORRECT  
AND TRUE TO THE BEST OF MY KNOWLEDGE.

*Rudolph H. Basselman*  
RUDOLPH H. BASSELMAN, PS. 6379  
PROFESSIONAL SURVEYOR.

**RUDOLPH H. BASSELMAN**  
Engineering & Surveying

1108 South Defiance Street Archbold, OH 43502  
(419) 446-2643